



It's Planting Time!

Annual Tree, Wildflower, Prairie Grass & Seed Sale Begins!!

Spring is right around the corner and that means one thing....*it's planting time!* Our annual tree and plant sale fundraiser is starting and we have just what you need to spruce up your yard, acreage or farmstead. Check out our brochure inserted in this newsletter for a listing of the bare root trees, native wildflowers and prairie grasses available.

Not only do these plants add beauty to your landscape, they can also add value to your property. During the summer, they help you save money by shading your home to reduce your cooling costs and they also protect your home from the winds of winter to reduce heating costs.

If you've been contemplating planting a windbreak, rain garden or prairie, stop procrastinating! There is no better time than the present. Planting a **WINDBREAK** can save on energy costs during the winter months by protecting your home, lane, buildings, or livestock from prevailing winds, drifting snow, and wind erosion. You can improve the water quality that leaves your rooftop or driveway and attract wildlife with a **RAIN GARDEN** or **NATIVE LANDSCAPING**.

Don't miss out on investing in this opportunity. We can assist you in choosing the trees and plants to suit your needs — just give us a call at (319) 337-2322 ext. 3 or visit our website and order online at www.jcswcd.org.

Orders due March 25th



Continuous Conservation Reserve Program



by Kate Giannini

Landowners with expiring CRP contracts should consider the benefits of Continuous CRP. Landowners can enroll new or expiring acres into conservation practices like native grasses, trees, or wetlands to reduce soil erosion, improve wildlife habitat and water and air quality. In addition, these practices offer yearly rental payments, cost-share, bonus incentives, and technical assistance. CRP rental rates increased in 2007 with most averaging from \$140 - \$200/acre.

Interested landowners should contact the Johnson County Soil & Water Conservation District office at 319-337-2322 ext. 3.

Preventing Erosion: A Cooperative Concern by Matt McAndrew

As we know rain brings the possibility of erosion, erosion damages the property on which it occurs and it also damages water quality downstream by adding sediment and nutrients. There is a way to reduce this damage; landowners can plant vegetative buffers along streams and waterways.

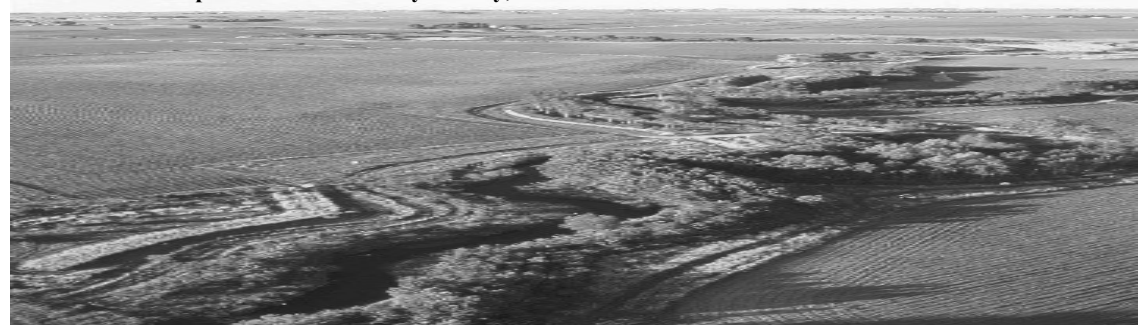
The adoption of contour buffer strips, grassed filter strips, and riparian forest buffers reduces sheet and rill erosion by as much as 30 percent. Grassed filter strips intercept undesirable contaminants from runoff and slows the velocity of the water, allowing for settling out of suspended soil particles. Riparian forest buffers, which include tree plantings in riparian areas, cut sediment in surface runoff as much as 90% and nitrogen and phosphorus in runoff as much as 80%. The Conservation Reserve Program offers a variety of benefits, including reducing soil erosion, improving water quality, enhancing wildlife habitat and improving a farm's appearance.

To help in this effort, the Johnson County Soil and Water Conservation District has launched a buffer initiative in 2009 to work directly with county landowners to provide ways to buffer perennial streams, slow erosion and protect our water quality. Future Farmers of America (FFA) chapters in the county have signed on to help in this effort. Contacts have been made with many partners to share in this effort.

Johnson County residents who own land on a perennial stream should consider joining the Johnson County Soil and Water Conservation District, students from Future Farmers of America and their neighbors in this collaborative effort. You can become a part of this movement to reduce sediment and other contaminants in our streams and provide habitat for wildlife by planting a buffer to help filter surface water.

To join the Johnson County Buffer Initiative, contact the FFA teachers of West Branch, Iowa Mennonite School and Mid-Prairie and ask a future farmer to visit your farm or contact Matt McAndrew, Clear Creek Watershed Technician at (319) 337-2322 ext. 3 or e-mail matthew.mcandrew@ia.nacdnet.net.

Bear Creek Riparian Buffer in Story County, IA. USDA National Research & Demonstration Area



Clear Creek Watershed

By James Martin



70! **New Sediment Basins and Terraces in progress:** Despite a late harvest and wet fall, 12 landowners started or completed projects in the upper reaches of Clear Creek east of Conroy.

10 **Volunteers needed:** The newly formed Iowa Flood Center, located at the University of Iowa, is in need of 10 landowners willing to provide a location on their farm for a special rain gauge. Scattered throughout the Clear Creek watershed, the rainfall data will contribute to ongoing research on flooding prediction. Real-time data from your rain gauge can be viewed on the Flood Center's website <http://www.iowafloodcenter.org/>.

? **Do You Currently Use Cover Crops? Interested in trying them?** We are interested in hearing from you. Research shows cover crops provide a reduction in Nitrogen and Phosphorus leaching, reduced soil erosion and greater water infiltration capacity. A late summer 2010 field day is being planned and we are looking for potential fields to visit in the Clear Creek watershed that currently use cover crops or are willing to try them as a demonstration plot.

If you are interested in a rain gauge or using cover crops please contact Matt McAndrew at the Johnson County NRCS office for more information.



Johnson County Integrated Roadside Vegetation Management (IRVM) maintains a safe travel environment on the county right-of-ways, controls noxious weeds and soil erosion, sustains water quality, improves wildlife habitat, and provides the public with aesthetically pleasing roadsides.

For more information and to check out our programs for landowners go to www.johnson-county.com

Linn-Johnson Local Food Task Force is Revitalizing the Local Food System



The Linn-Johnson Local Food Task Force and Jason Grimm, Iowa Valley Resource Conservation & Development Food System Planner, have the mission to develop strategic partnerships to revitalize a local food system within the corridor. Their vision of the corridor is one that embraces local foods in a diversified and environmentally conscious agriculture community; serving as a hub for a revitalized regional food system.

The Task Force is looking for input from producers and rural land owners in Johnson County. The Task Force's goals are to: ensure the viability of local food enterprises; increase the availability of local food; increase the local food infrastructure; strengthen the local food marketing campaign; increase the knowledge of local food; and ensure the recycling and reuse of nutrients in the food system.

Follow the Task Force efforts and projects at:

<http://johnsonlinn-localfood.webs.com>

Johnson County Heritage Trust presents.... Prairie Preview XXVII

Prairie Preview XXVII will be held at Parkview Evangelical Free Church, 15 Foster Road in Iowa City on Tuesday, March 9th, 2010 at 6:30 p.m.

This year's guest speaker is photographer and writer Bill Witt. Mr. Witt's talk is titled, "Enchantment by Prairie," which is also the title of his newly released book.

This event includes information and displays from your local environmental organizations / agencies, it is **free** and open to the public. Refreshments will be provided.

For more information please call Tammy Richardson at (319) 857-4741.

Thank-you! Lake Macbride Watershed Landowners & Operators

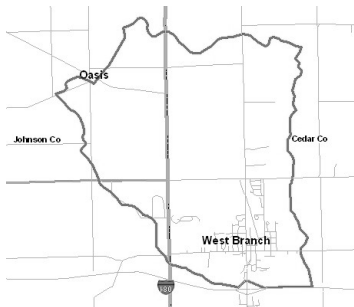


By Amy Bouska

- | | |
|--------------------------------------|------------------------------------|
| <i>Doris and Milt Anderson</i> | <i>Lincoln & Lisa McIlravy</i> |
| <i>Richard Barta</i> | <i>Robert Mickelson</i> |
| <i>Batson Farm Ptnship</i> | <i>Dean Miller</i> |
| <i>Tom Brown</i> | <i>Don Miller</i> |
| <i>Eleanor Brumwell</i> | <i>Delores Miller</i> |
| <i>Chain Ridge Subdivision</i> | <i>Steve Miller</i> |
| <i>Cottage Reserve Subdivision</i> | <i>Thomas Miller</i> |
| <i>Rose Ann & Jeffrey Deitch</i> | <i>Paul and Janet Moore</i> |
| <i>Malinda Dittberner</i> | <i>Larry and Marcy Olson</i> |
| <i>Mike and Jean Divoky</i> | <i>Daniel Poduska</i> |
| <i>Brad Dvorsky</i> | <i>Dorothy Poduska</i> |
| <i>Robert Dvorsky</i> | <i>Paul Rasch</i> |
| <i>Terry Edmonds</i> | <i>Joe and Mardi</i> |
| <i>Neil Erusha</i> | <i>Rasmussen</i> |
| <i>Chuck Gleason</i> | <i>Dean Rebal</i> |
| <i>Gene Greazel</i> | <i>Solon School District</i> |
| <i>Tom Greazel</i> | <i>John Reilly</i> |
| <i>Dave & Marianne Harney</i> | <i>John Schmidt</i> |
| <i>John Henik</i> | <i>John See</i> |
| <i>Roland & Kathryn Henik</i> | <i>Ron See</i> |
| <i>Mike & Lucy Hershberger</i> | <i>Shagbark Acres</i> |
| <i>Tom and Lorna Jerred</i> | <i>Subdivision</i> |
| <i>Anne Kent and Jeff Miller</i> | <i>Rita Shanahan</i> |
| <i>Glee Kessler</i> | <i>Kevin Shima</i> |
| <i>Kevin Kidwell</i> | <i>Leo Shima</i> |
| <i>DeWayne Klouda</i> | <i>City of Solon</i> |
| <i>Don Klouda</i> | <i>Solon Stahle</i> |
| <i>Evelyn and Louis Kral</i> | <i>Sam Stahle</i> |
| <i>Johnson County</i> | <i>Daryl and Virginia</i> |
| <i>Secondary Roads Dept</i> | <i>Steinbrech</i> |
| <i>Lake Macbride State Park</i> | <i>Matt Steinbrech</i> |
| <i>Terry and Shirley Lamb</i> | <i>Jim and Carol Steinbrech</i> |
| <i>Larry Leonard</i> | <i>Kevin Steinbrech</i> |
| <i>Bill Leefers</i> | <i>Tony Ulch</i> |
| <i>Tim Linder</i> | <i>Robert Upmeyer</i> |

Hoover Creek Watershed

by Judy Hagan



The Hoover Creek Watershed is comprised of two branches which run through West Branch and the Hoover Park and Museum. The drainage primarily comes from Cedar County land, however there is also a portion of land from the Oasis area in Johnson County that drains into the watershed as well. Combined

the two branches drain 5,068 acres. Past rainfalls as far back as the 1960's have created flooding problems for both the town of West Branch and the Hoover Park and Museum.

The Cedar County SWCD has received financial assistance through an IJOBS Bonding Fund to conduct a hydrology study and to provide cost share for landowners to install conservation practices within the watershed. Meetings will be scheduled in the near future for landowners, operators and stakeholders to address drainage issues and discuss solutions for the rain to infiltrate the land. Hoover Park is also looking at ways to reduce runoff such as installing permeable pavement on replacement projects.

For more information on this watershed project please contact Hoover Creek Coordinator, Judy Hagan, at the Cedar County SWCD in Tipton 563-886-6214 ext. 3 or join us on Facebook at Friends of the Hoover Creek Watershed.

Rapid Creek Watershed

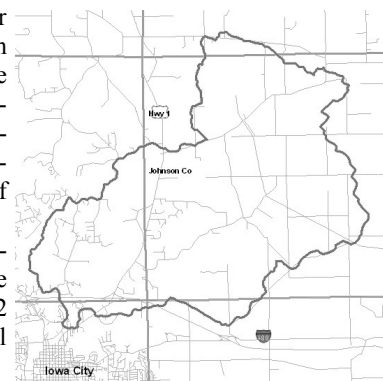
by Kate Giannini

Rapid Creek watershed is 25 square miles and is a major sub-shed of the drainage area that flows into the segment of the Iowa River between the Coralville Lake Dam and the Burlington Street Dam. This area of the Iowa River is listed on the impaired list for excessive indicator bacteria.

The Johnson Co SWCD staff completed a development grant in the Spring of 2009 for the Rapid Creek watershed; which included a stream & land use assessment, weekly water monitoring, education & public outreach. The data collected will help the district apply for future funding.

In November the district received a grant from the Iowa DNR to complete a watershed management plan by 2011. Watershed Management Plans are a requirement from EPA in order to receive 319 funds through the Clean Water Act. This grant will help with education and outreach to the public, monthly water monitoring, writing of the management plan and creating a watershed board consisting of Rapid Creek stakeholders.

If you are interested in getting involved call Kate Giannini at 319-337-2322 ext. 3 or email kate.giannini@ia.nacdnet.net



Meet new employees Tom Stoeffler & Leiah Zimek



Leiah Zimek joined the NRCS in October of 2009 as a Soil Conservation Technician. She is a Northern Wisconsin native and holds a Bachelor's of Science degree in Natural Resources with an emphasis in fish and wildlife ecology from Northland College in Ashland, Wisconsin.

After college, Leiah worked as a veterinary technician for a mixed practice veterinary hospital for three plus years. Last year, she joined AmeriCorps and served at the Prairie Resource Center for the Iowa DNR.

Leiah is an avid outdoors person and enjoys hiking, camping, hunting, fishing, horseback riding, harness driving, cross country skiing, and dog sledding. She moved here with her dog, Remi (a 5 year old Labrador Retriever) and horse, Gracie (a 2 year old Norwegian Fjord). You can contact Leiah at leiah.zimek@ia.usda.gov.

Tom Stoeffler joined the Johnson Co. SWCD in December 2009 as a Conservation Assistant. A native of Cedar Rapids, Tom moved to Iowa City in 1996 to attend the University of Iowa where he received a Bachelor's degree in Anthropology and Art.

Along with a diverse work history, Tom has spent his summers as a Coordinator for the University of Iowa Summer Wildlife Camps and is an appointed member of the City of North Liberty Tree and Storm Water Advisory Board. He is extremely

excited about working for the JCSWCD and learning about/participating in all of the great work they do.

As an outdoor enthusiast Tom enjoys trail running, kayaking, fishing, bird banding, gardening and spending time at his family's century farm in NE Iowa. He currently resides in North Liberty with his wife, two children and Otto the dog.

You can reach Tom at 319-337-2322 ext. 3 or email Tom.Stoeffler@ia.nacdnet.net.

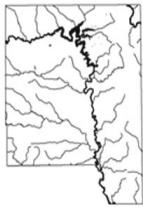
Volunteers NEEDED Unlimited Opportunities

We have a variety of volunteer opportunities available here at the JCSWCD for all ages. No matter your interests or abilities – if you care about our soil and water quality we can use your help!

Volunteers can assist JCSWCD staff with: field work, research, water monitoring, clerical, environmental awareness, photography, assist with preparations for our annual tree and native plant sale, and more.

If you are interested contact Kate Giannini at 319-337-2322 ext. 3, or Kate.Giannini@ia.nacdnet.net to set an appointment.

Johnson County Soil & Water
Conservation District



51 Escort Lane
Iowa City, Iowa 52240
Phone: 319-337-2322 ext. 3
Fax: 319-351-2997
E-mail: jcswcd@yahoo.com
Website: www.jcswcd.org

ADDRESS SERVICE REQUESTED

NONPROFIT ORG
US POSTAGE
PAID
IOWA CITY IA
PERMIT #11

Our Mission:
*"To clear our water
by treating every acre
with respect."*

The United States Department of Agriculture (USDA) prohibits discrimination in all its programs and activities on the basis of race, color, national origin, sex, religion, age, disability, political beliefs, sexual orientation, and marital or family status. (Not all prohibited basis apply to all programs). Persons with disabilities who require alternative means for communication of program information (Braille, large print, audiotape, etc.) should contact the USDA's TARGET Center at 202-720-2600 (voice and TDD). To file a complaint of discrimination, write USDA, Director, Office of Civil Rights, Room 326W, Whitten Building, 14th and Independence Avenue, SW, Washington DC 20250-9410 or call (202) 720-5964 (voice or TDD). USDA is an equal opportunity provider and employer.

Also Available from JCSWCD...

*Technical Services Available to Aid in Conservation Practice Planning,
Windbreaks, Ponds, Wetlands, Prairies and More!*

For Rent

Custom Broadcast Seeder

(includes Truax Seeder, ATV and operator)

- \$30.00 per acre
- \$20.00 per acre for 60 + acres
- \$150.000 minimum charge

Tree Planter (3 point hitch type)

\$25 per use + \$.01 per tree + tax

Waterway Shaper

(Hurricane Ditcher brand)

- \$25.00/hour + tax
- \$105.00 minimum charge

Ask about custom operators

**Call (319) 337-2322 ext. 3 to
schedule equipment rental.**

FOR SALE:

- Prairie Seedling Guide - \$6 each
 - Tree & Shrub Guide - \$6 each
 - Prairie Pocket Guide - \$6 each
 - Invasive Species Guide - \$6 each
- (Buy 2 or more @ \$5 each/tax included)

MARKING FLAGS

100 @ \$15 / 25 @ \$4 / 10 @ \$1.50 (tax included)

TILE PROBES-\$24.95 + tax
HAND LEVELS-\$19.05 + tax

CD's on sale for (includes tax)

- The Rain on Your Roof \$2.00
- How to Build a Rain Garden \$2.00
- Soilview Johnson County \$5.00

TREE TUBES by TREE PRO

•36" @ \$4 ea • 48" @ \$5 ea (plus tax)
Protects your trees from deer & rabbits
(Stakes not included)



**TREE SALE
KICKS OFF!**

**2010
JCSWCD
Annual
Fundraiser**

**Bareroot
Trees,
Wildflowers,
Prairie Grass,
& Prairie Seed**

**SALE
BROCHURE
Enclosed**

**JCSWCD now sells - Rain Barrels -
see Annual Sale brochure to order.**

**Tree & Plant Sale Orders
due March 25th**